

**NPPF- PLANNING FOR HAMPSHIRE**

Unless you have been hiding for the last 2 months you will have heard about our high profile campaign against the Government's National Planning Policy Framework (NPPF) which aims to radically reform England's planning process.

CPRE Hampshire supports development where it will meet local established needs for economic growth and housing, especially affordable housing for local people. We support a thriving local economy. We advocate development of brownfield sites before greenfield sites as they make more efficient use of a finite land supply, provide housing where there are already existing facilities, help in regenerating our cities and town centres, and save precious countryside and agricultural land needed to grow food.

The South of England is a crowded place and faces great pressures, yet for the past 60 years we have had planning policies which have allowed growth and development and at the same time largely protected our countryside and natural environment - a success acknowledged worldwide and one which has greatly benefitted our enjoyment of life and wellbeing, and which is the basis of a successful tourism industry.

Over the past 20 years over 70% of development has been allocated on brownfield develop-

ment- can you imagine what Hampshire would look like today if this hadn't been in place?

We recognise that the planning system has become over-complicated and that some reform is now needed. CPRE Hampshire has been supporting Government announcements over the last year which have anticipated a system that would be simpler, less adversarial, promote



truly sustainable development, take away top down driven plans, and reinvigorate the involvement of local people in shaping the places where they live through Neighbourhood Planning and locally produced Local Plans.

Yet, the NPPF as worded would undermine all the principles contained in these announcements in favour of what would turn out to be a top down driven system based on Planning Appeals and Judicial Reviews, overriding the views of local people on de-

velopment of their area, and giving largely free reign to developers to develop countryside outside nationally designated areas.

It is our view that the draft NPPF will need to substantially revised for it to become a set of planning principles which will command the degree of support and respect that will be needed to prevent it being invoked as the cause whenever greenfield development is allocated in a Local Plan or permitted on application

contrary to the views of local people, whether justified or not.

Ministers have stated that the continuing purpose of the planning system is to act in the public interest in balancing economic, social and environmental considerations - to which we would add the sensible resolution of inevitable conflict through local democracy.

Whilst economic growth is clearly a consideration, the planning system is not therefore a tool for economic growth or to proactively drive development, as clearly implied by the draft NPPF and should not be so. Planning exists to ensure that the pub-

lic interest as a whole is given adequate weight in decision making.

Some have suggested that the Government has the right approach and in order to get out of this recession we need to build more houses. To this we would point to the many which are not being started by developers. An excess of supply of housing will not improve affordability. New housing is such small percentage of overall housing that it does not shift the market. It is inconceivable that even a large programme of house building in Hampshire would do much to reduce house prices. The price of housing is driven by macro economic factors such as interest rates, contrast with stock markets, bank lending policies and so on.

We have been working on behalf of you and the Hampshire countryside to raise our concerns over the implications of the Framework. We have held meetings with local MPs, sent briefings to County Councillors, local councillors, parishes and local amenity groups. We have written to the newspapers and sent an email campaign.

**Thank you to everyone who responded to the NPPF, writing letters to MPs & signing petitions.**



**BARTON FARM SUCCESS!**

We are pleased to hear about the Inspector's decision refusing the application on Barton Farm, which the charity has always felt to be an inappropriate development for the setting of Winchester. The inspector was overturned by the SoS on the basis that to allow Barton Farm would be "premature" to the

emerging Core Strategy (housing document) in the context of Localism. This was the argument put forward by CPRE and Save Barton Farm Group—so is a great victory !

Campaigners have argued that Barton Farm should be protected as there were enough sites for new housing coming forward.

We would like to commend

the Barton Farm Group and specifically Mrs Chris Slattery, a member of CPRE and secretary to the Save Barton Farm Group, who has long campaigned to save the countryside at Barton Farm. She said: "We have always campaigned for use of Brownfield First, with green fields only to be used as a last resort."

Chris has written to thank CPRE for the charity's guidance and support which has enabled her to support the SBFG team through the Public Inquiry.



## GIVE AS YOU LIVE

Help Secure the future of CPRE Hampshire at no extra cost to yourself...



Members will be pleased to learn that we have joined a scheme which stands to

help secure the future of our Branch. It has the potential to radically change our financial situation at no cost to members. The scheme is called "Give As You Live".

Please take a look at our new website and click on the link found on our home-

page (an example of this link is shown to the left).

As the notes on the website explain, downloading the application will ensure that every time you, as a Give As You Live user, do any online shopping with a registered supplier - and there are plenty of these - CPRE Hampshire will receive a substantial proportion of the amount spent.

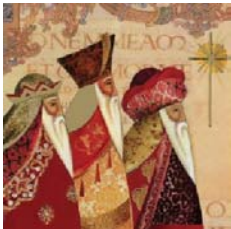
For example TESCO gives 5% of any spend to the shopper's nominated charity. So if only 250 people spend £50 per week for 40 weeks of the year on-line with TESCO, and they are signed up for Give As You Live, CPRE Hampshire will receive **£25,000**. There is no catch.

Over the Christmas period your use of on-line shopping and Give As You Live could put us on a sound financial footing for all 2012!

Please download the application at:  
[www.cprehampshire.org.uk/](http://www.cprehampshire.org.uk/)



## CHRISTMAS CARDS



Following on from the success of last year, we have a number of wonderful Christmas cards available for you to purchase. Enclosed with this bulletin is a list of cards

available along with a price list.

Payments can be made by cheque (made payable to CPRE Hampshire) or by credit/debit cards (including a small charge). Please email or call Jo George or Becky French for enquiries or to place an order. Revenue goes directly to branch activities—it is a great way to support CPRE through your usual activities.

## THERE'S SNOW ON THE WAY!

Whilst snow can be a bore for everyday life, it's a fantastic opportunity to snap a winter scene for our 2012 card! So why not take your camera when you venture out for a winter walk, and take a photo that captures the spirit of Hampshire?

Subjects such as animals, churches or a recognisable Hampshire land spots tend to make the best pictures.



You can send in your pictures any time up to the end of March 2011, when the process of selection will begin. Please send your pictures to: [info@cprehampshire.org.uk](mailto:info@cprehampshire.org.uk)

## MEMBERSHIP

Our aim over the next few years is to double our membership. We have a new membership leaflet- please help us stand up for your countryside by increasing our membership. Do you have friends and family who are like-minded? If so, please get in touch for a membership leaflet or download off our website <http://www.cprehampshire.org.uk/>



## PARISH & AMENITY GROUP NEWS

We recently sent out an email to all PCs providing advice on NPPF consultation- we hope you found this useful?

The Government's department for Communities & Local Government (CLG) has given CPRE funding for a joint scheme with National Association of Local Councils (NALC) in order to provide guidance and assistance to communities to engage with the planning system.

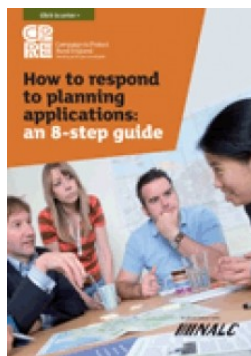
As part of this funding we have been asked to fulfil a number of roles;

- Planning explained- To produce a publication which aims to enthuse people in a jargon free way, about the important role of planning and set out why and

how they should get involved- this is in the process of being produced.

- To update and promote our planning website 'planning help' this can be accessed at: [www.planninghelp.org.uk](http://www.planninghelp.org.uk)

- to update our 'how to respond to planning applications' booklet- all member PCs should have received this by now. You can also access it online at:



- To provide training for local people with regards to localism and neighbourhood planning- this is where the Hampshire branch come in!! See above.

## PC SEMINAR 2011/2012

For this year's parish seminar we intend to hold a free workshop on Localism and Neighbourhood Planning which will be designed for people who have an interest in planning... or anyone who wants to get involved!

We hope to hold a seminar in 2011, however, if time doesn't permit we will run the session in early 2012.

Please look out for our email relating to the seminar or check out our website

- National network of planning champions- volunteers will be available to offer advice to local groups and Parish & Town Councils and enthuse people about the value in planning.

This funding is an great opportunity for CPRE to be involved with local communities. We would like to assure our members that this funding will not affect our campaigning.

**MEMBERSHIP BENEFIT**



An additional benefit for CPRE Hampshire members negotiated and arranged by the staff of CPRE Hampshire from Bridgett's Farm Offices.

**What does it offer?**

A 15% discount in store purchases nationwide at Millets & Blacks, leading outdoor clothing and equipment suppliers (see [www.Millets.co.uk](http://www.Millets.co.uk) or [www.Blacks.co.uk](http://www.Blacks.co.uk)).

The Specialist Discount Card entitles its holder to a 15% discount on all in-store purchases at over 300 Millets and Blacks Stores within the UK & Ireland of which 12 are in Hampshire. The Card can be used in conjunction with sale and promotionally priced items so the discount potential is often well over and above the 15% rate.

The only exclusions to the Specialist Discount Card offer are: online purchases, GPS, Gift Card and Sat Nav products. Full

terms and conditions are printed on the rear of the cards covering letter.

The cards, with a special covering letter explaining their usage and conditions, will be mailed to individual members by a specialist mailing company.

**Doesn't this mean my personal details are compromised?**



The specialist mailing company is covered by similar protocols to those used when mailing the publications sponsored by national office (eg: Countryside Voice) and other charities. No personal details are retained by the retailer (Millets & Blacks).

**Will I receive additional junk mail either by e-mail or through the post as a result of this scheme?**

No! Naturally the stores wish to alert members to special offers and seasonal deals so specialist customers (us!) can benefit from them. Any such notices will be sent by e-mail from our offices and we

will endeavour to ensure they are included in other, CPRE Hampshire related, distributions.

**For what period are the cards valid and how will they be renewed?**

The cards are valid for one year from date of issue. They will be renewed annually using CPRE Hampshire's up to date list of members. This means that new members will have to wait for the next anniversary of issue to receive their cards.

**Can I withdraw if I wish to? What is the catch?**

Members can withdraw from the scheme by alerting the office and destroying their cards - it is as simple as that. There is no catch - other organisations like Ministry of Defence and charities like the Angling Trust and many others already taking advantage of the scheme.

An exclusive benefit to Hants members!



**A GREAT BENEFIT EXCLUSIVE TO CPRE HAMPSHIRE MEMBERS!**

**500 CLUB**

**You've got to be in it, to win it!**

As some of you will know, the 500 Club has been a great success since its launch and following on from this, we have now added a **more convenient way** for you to pay for your monthly shares. For those members who have at least five or more shares in the 500 Club we are offering the ability to **pay monthly by Standing Order** direct to us from your bank account. This means that you can have five

shares which cost £60 per annum for a regular monthly payment of £5 (£1 per share per month), with no need to send us renewal cheques every year we give out between £120-£200 a month (depending on numbers in play) and our winning members regularly use the money to treat themselves or loved ones. Many members are already reaping the benefits of the Club, and we still have some numbers available. Through your support the 500 Club raises an important amount of money for us to continue valuable work within our county of Hampshire. Why not join in the success and

have your chance of winning a monthly cash prize whilst supporting CPRE Hampshire at the same time! Membership costs £12 per annum per share, but to maximize your chances of winning, **please do consider the option to increase your shares to five or more** at a cost of £1 per month, per share, payable by convenient Standing Order.

For further information or for a Standing Order mandate form, please contact us at branch office on 01962 779185 or by e-mail to [jo.george@cprehampshire.org.uk](mailto:jo.george@cprehampshire.org.uk)

Thank You and GOOD LUCK!

**LEAVING A LEGACY WILL MY MONEY MAKE A DIFFERENCE?**

The countryside you see today is a testament to those supporters who have generously helped us in the past and to our supporters who help us now, but the future will bring even greater challenges. The pressures that the countryside faces from development, population growth and climate change could destroy its natural beauty forever. Housing demand will put pressure on our open spaces whilst climate change will put a strain on land supplies changing the visual beauty of our landscapes forever. And who knows what other demands will face our countryside in the future?

Please help us by leaving a gift in your Will and leave a lasting legacy for the future of Hampshire's countryside

Your legacy doesn't have to be a large gift; although some special friends have left us more, most of our legacies are between £500 and £50,000.

You can see that your future help will make a real difference at whatever level you give. Leaving a gift in your Will, will ensure future generations have the opportunity to look upon the countryside you love, experience its tranquillity and enjoy its beauty too.

For more information about leaving a legacy, making or changing your Will or to let us know you have already included us in your will please call 01962 779185



CPRE Hampshire  
Bridgetts Farm Offices  
Bridgetts Lane  
Martyr Worthy  
Winchester  
Hampshire  
SO21 3JU  
01962 779185

**Anthony McEwen:**  
anthony.mcewen@cprehampshire.org.uk

**Becky French:**  
becky.french@cprehampshire.org.uk

**Jo George:**  
Jo.george@cprehampshire.org.uk

Charity number: 245967

**Check out our new website:  
[www.cprehampshire.org.uk](http://www.cprehampshire.org.uk)**

#### **VOLUNTEERING:**

##### **- FINANCIAL EXAMINER FOR 2012**

As a small charity we don't need a formal audit, but need our accounts examined by 'a competent person'. You just need a understanding of accounts at a relatively simple level. We would be very grateful if a member would like to volunteer or put us in contact with someone suitable.

##### **- JOIN OUR FINANCE TEAM**

We're looking for a member to get involved with our finance group. You don't have to have financial qualifications, just an interest in CPRE and our future wellbeing. We are open to new fundraising ideas and welcome new ideas. **Ability to attend at least 2 meetings a year & some additional work.**

##### **- OPERA HELP**

Invitations-printing, co-ordination, distribution & mailing for the end of March 2012

Advertising of the event- organise design, printing and distribution of flyers to: businesses & other local sources. **for the end of March 2012**

Opera Programme production- source advertisers, compile programme & liaise w printers. **A few hours a week between to be printed by 14th June.**

## **WALKS & TALKS PROGRAMME 2012**



**MANAGING RURAL BUSINESS-** Combined trip to Hill Farm Juice & Hill Place in Swanmore on Wednesday 25<sup>th</sup> April 2012, from 11am to 3.30pm.

The tour will start at Hill Farm Juices an award winning Hampshire company. A tour of the farm and working practises will finish with a tasting session. Visitors are welcome to bring a picnic to enjoy in the grounds or they can visit a local pub. There will then be a tour of the Hill Place, a Georgian country villa, which featured on the Channel 4 programme 'Country House Rescue'. Set within 20 acres of well-tended parkland and surrounded by the family's (Hill Farm) orchards with views to the Isle of Wight. Guided by the owners, the visit will be a chance to discover the fascinating history of the estate and to learn more about their 'Country House Rescue' experience and plans for in the future. **£5 for members & £7 for non-members**

**LIVING WITH ENVIRONMENTAL CHANGE -A talk by the Earl of Selborne at Itchen Abbas Village Hall on 21st March**



The Earl of Selborne GBE FRS is a hereditary (elected) member of the House of Lords and a past chairman of its Select Committee on Science and Technology. He is Chairman of Blackmoor Estate Ltd, a farming company with in Hampshire interests in fruit growing and packing, nursery produce and arable farming. He chairs the Partners Board of Living with Environmental Change (LEC), an ambitious and innovative partnership. The aim of the partnership is to ensure that decision makers in government, business and society have the knowledge, foresight and tools to mitigate, adapt to and benefit from environmental change. The partnership has a growing international reputation and has a role in developing the UK's green economy with relevant skills, tools, knowledge and innovation. **Tickets £15 and this includes canapés & a drink.**



**HISTORY & CONSERVATION: Visit to Danebury Hill on Wednesday 25th July 10am**

The group will meet at Danebury Hill where CPRE member John Moon, will lead the walk and will point out some of the interesting plant and insect species to be found there. Much of the hill is covered by chalk downland, a very scarce and valuable habitat. Wildflowers growing on the hillside include pyramidal orchids, wild thyme and agrimony. Skylarks and butterflies flourish on the grassland slopes. John will also link to the Museum and talk about some of the historical facts about the hill fort's occupation and subsequent excavation. There will be a stile to cross and a few earth banks to negotiate, but otherwise it will not be a strenuous walk. **Members are invited to join us for lunch at a local pub. £5 for members & £7 for non-members.**



#### **CPRE HAMPSHIRE'S ANNUAL OPERA:**

Following on from the success of this year's opera we are currently planning our 2012 opera.

The opera is likely to be held in Winchester and we are exploring the potential of joining the Winchester Festival which runs an annual arts programme during July.

We are currently looking at the popular Mozart operas of the Marriage of Figaro & Don Pascal which promise to make for a fun and enjoyable evening. **PLEASE RESERVE 14TH JULY IN YOUR**

#### **DIARIES**

**Other trips include a visit to a Radian's eco-housing in Petersfield & more trips details to follow in Hampshire Views 2012**